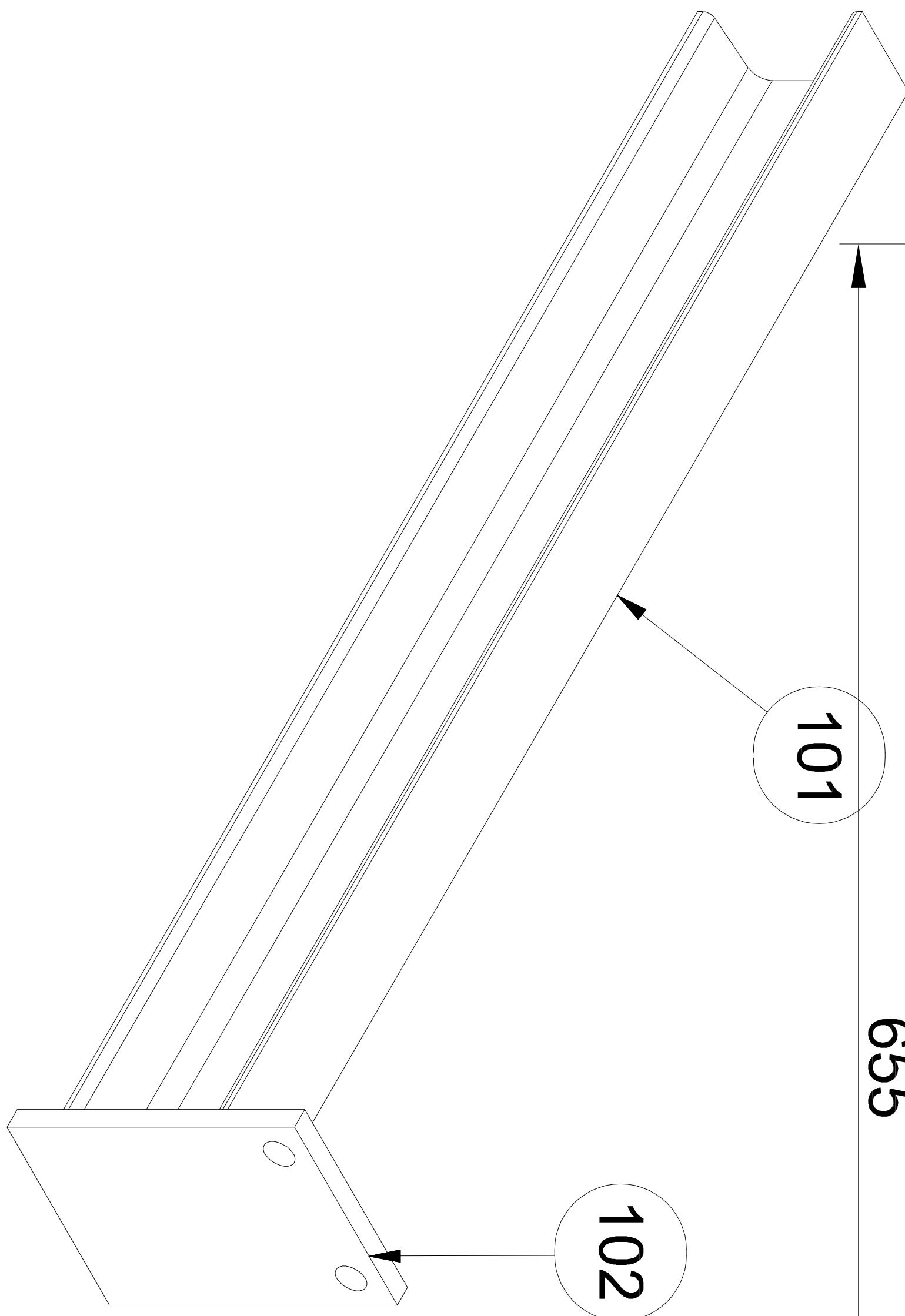
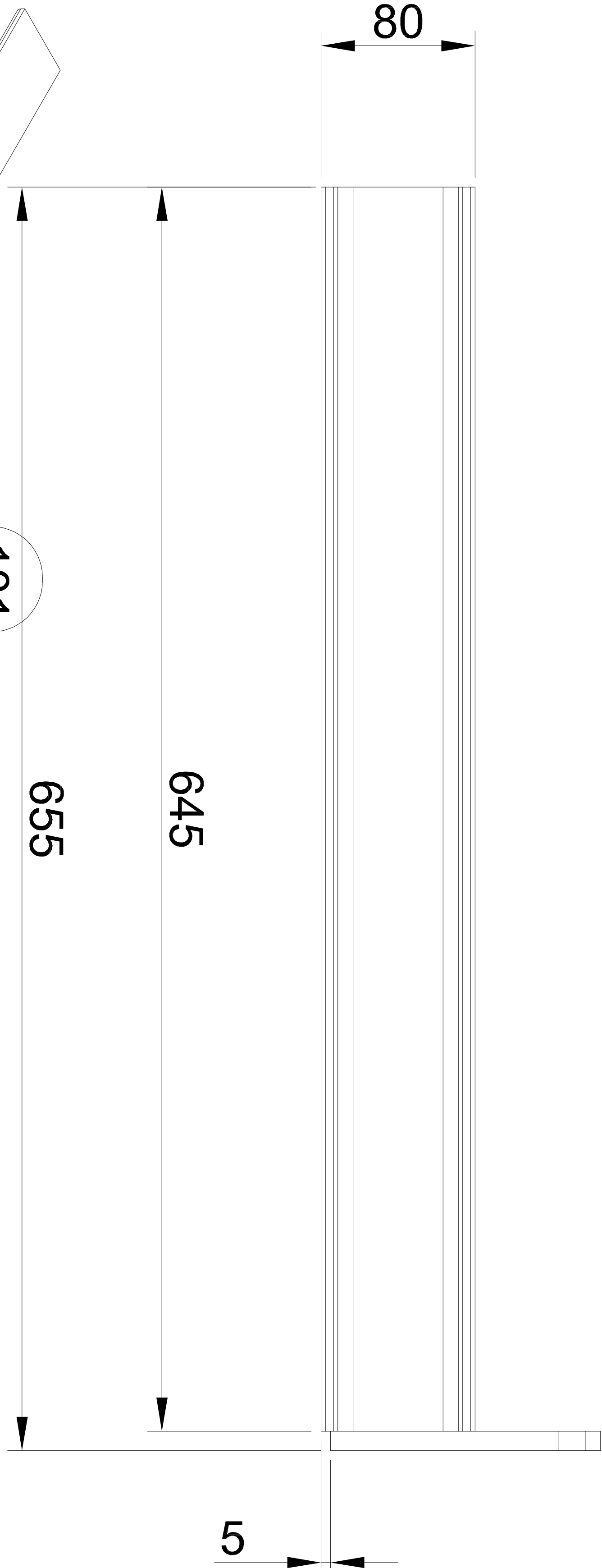
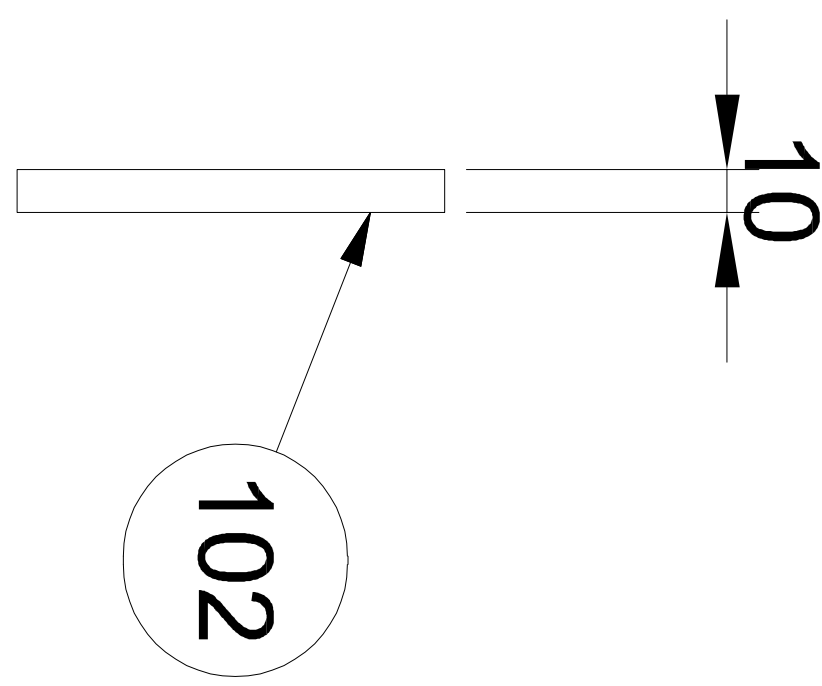
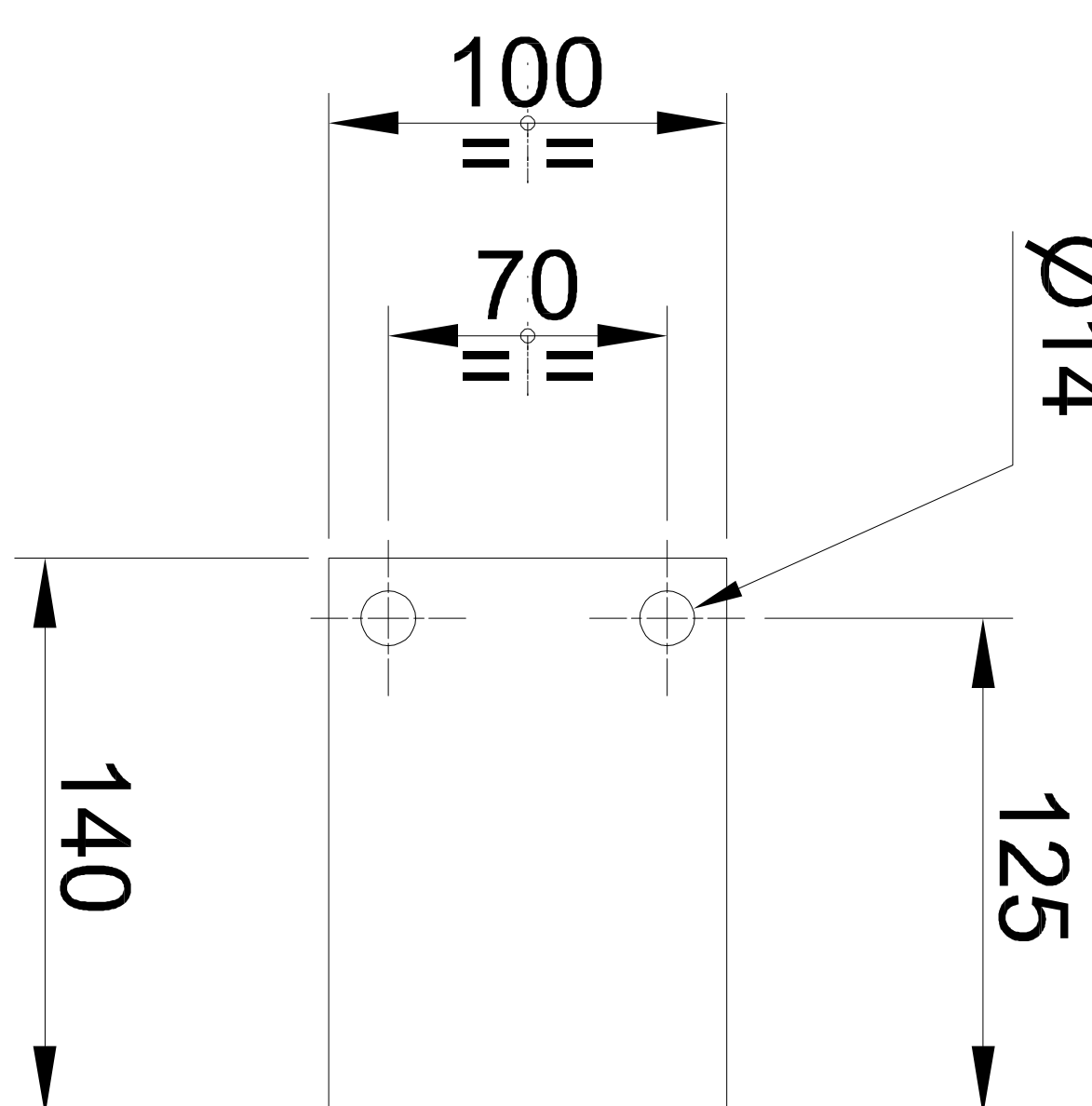
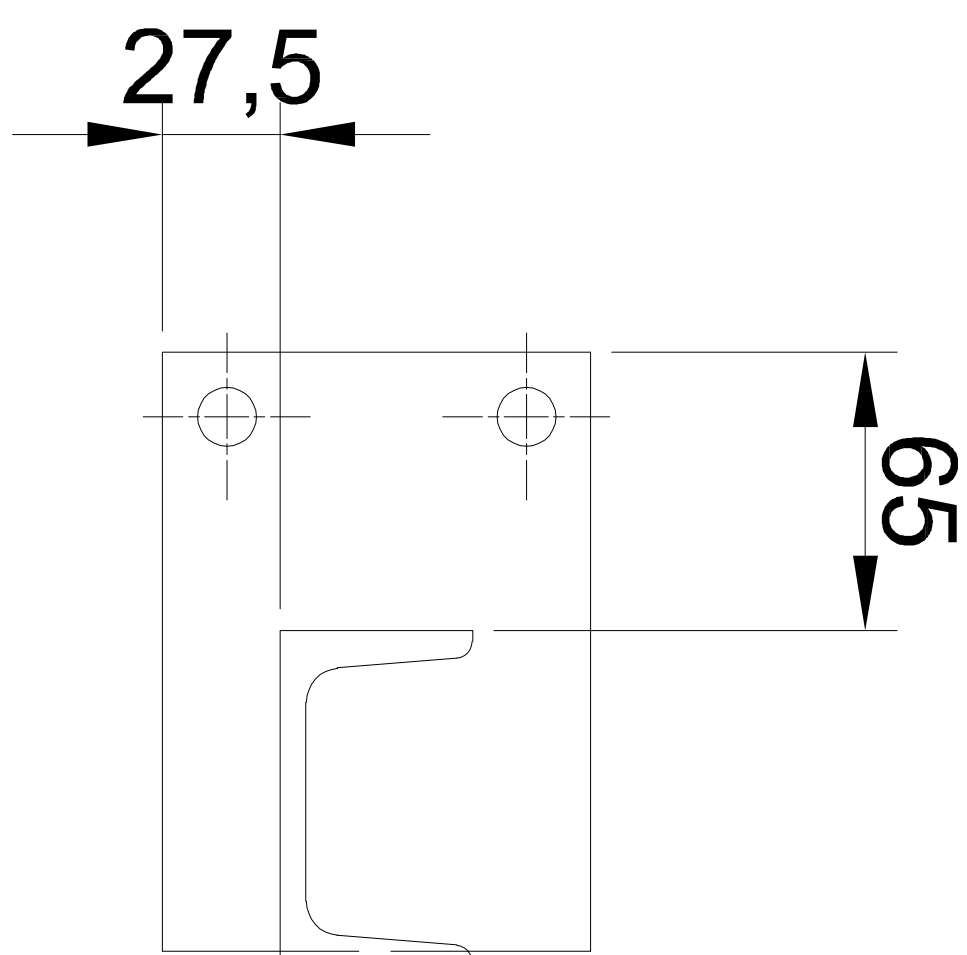
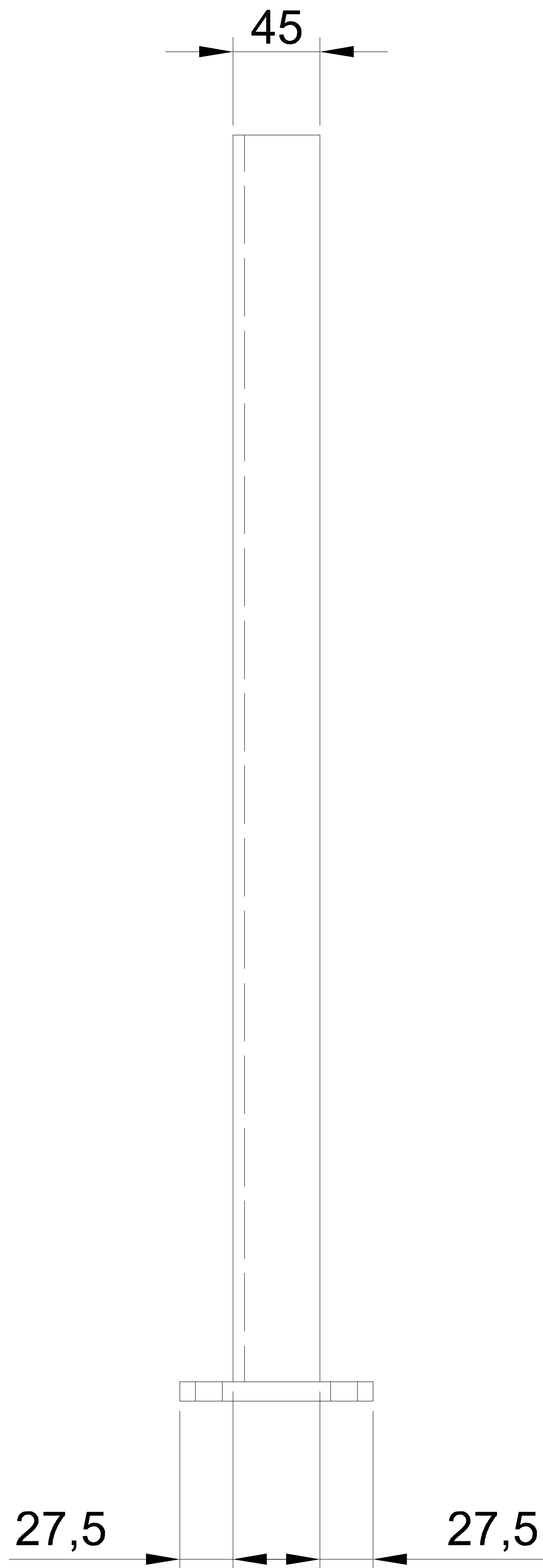


6															5															4																																																																					
GENERAL MACHINING TOLERANCE - GRADE MEDIUM (UNI EN ISO 22768)																																													REMOVE SHARP EDGES TOGLIERE SPIGOLI VIVI																																																						
TOLLERANZA GENERALE DI LAVORAZIONE - GRADO MEDIO (UNI EN ISO 22768)																																																																																																			
Size															above up to					Gruppo di dimensioni					oltre fino a					-					6					30					120					400					400					1000					2000					4000					Chamfer Smusso															0.5x45°					R=0.5				
															Tolerance															Scostamenti					±0.1					±0.2					±0.3					±0.5					±0.8					±1.2					±2					±3																													



PAINTING STANDARDS

Paint the unworked surfaces as indicated:

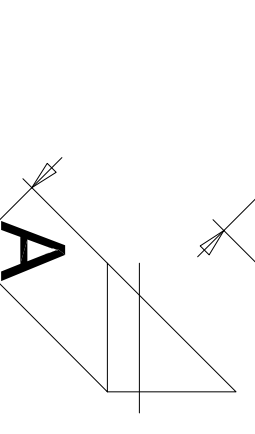
- n°1 layer of Inorganic Zinc, thickness 75µm.
 - n°1 or more layers of two-component epoxy paint, thickness 175µm.
- The thickness of the final layer will therefore be no less than 250µm.

RAL

NORME GENERALI DI SALDATURA
GENERAL RULES FOR WELDED JOINTS

PREPARAZIONE DEI LEMBI SECONDO "DIN 1912"
EDGE PREPARATION FOR WELDING ACCORDING TO

DOVE NON ALTRIMENTI INDICATO - $A = 0,7$
DELLO SPESSORE MINIMO DA COLLEGARE
WHERE NOT SPECIFIED - $A = 0,7$
OF THE MINIMUM THICKNESS TO BE JOINT





1	Piastrina	Platelet	102	S275JR EN 10025		1,1	
1	Profilato UPN 80 - L=645 - UNI EN 10279	Profile UPN 80 - L=645	101	S275JR EN 10025		5,6	
Q.tà	Descrizione	Description	Pos.	Materiale	Numero Parte	Massa	RIC.

Q.TA'				
S.P.	R.V.	R.V.	S275JR EN 10025	6,7 kg
Disegnato	Verificato	Autorizzato	Materiale	Massa
25				

Descrizione:

Trave sostegno lamiera

(Sheet metal support beam)

SSIEME		COMMESS	
			
			
<p>Disegno N.</p> <p>60-26-00B-1 11</p>			
<p>Scala: 1 : 5</p>		<p>Revisione: 0</p>	
<p>Foglio: 1 di 1</p>			

A termine di legge e' rigorosamente vietato riprodurre o comunicare a terzi il contenuto del presente disegno

Via per Ornago, 8 - BURAGO DI MOLGORA - C.A.P. 20875 (MB) - ITALY
Tel. 039/635021 FAX 039/6081373 - e-mail: bruno.presezi@brunopresezi.com